



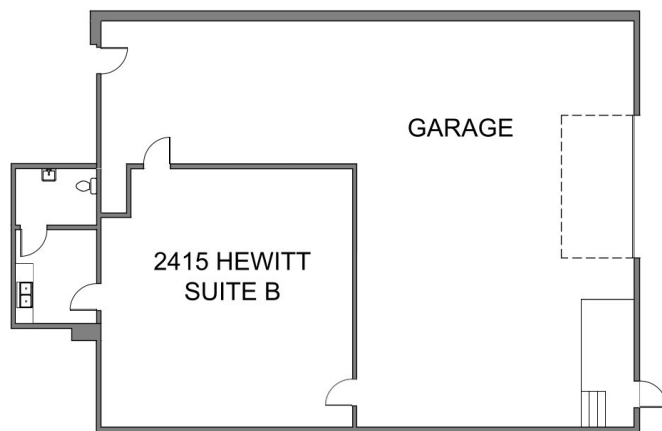
# 2415 B Hewitt Ave

## \$3200/month NNN

### ABOUT THIS PROPERTY:

This unit combines a separate office space with a garage area that can be used for manufacturing, storage, etc.

Quick access to I-5 and downtown Everett. Close to Angel of the Winds Arena, Snohomish County Courthouse, Everett Transit Station and more!



- ✓ 3000 SF
- ✓ 600 amp, 3 phase power
- ✓ Garage door to alley
- ✓ Private kitchen area
- ✓ Private bathroom
- ✓ 10.5' ceiling height
- ✓ NNN - \$3/SF/Year
- ✓ **Price Reduced for 1st Year! Less than \$13/SF/Year!**

2415 B Hewitt Avenue, Everett, Washington

